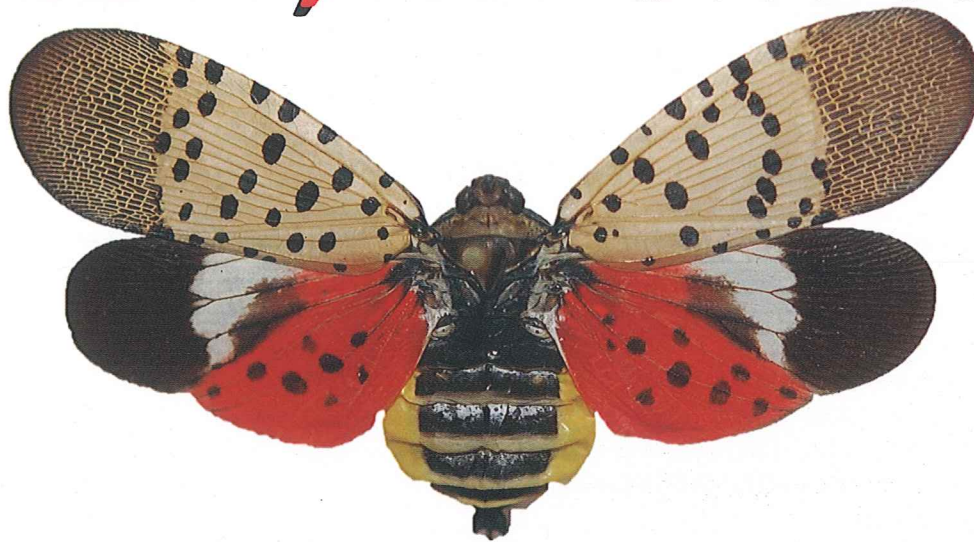


# SEE IT, REPORT IT!



## Spotted Lanternfly

### What to do:

If you see egg masses, scrape them off, double bag and throw away.  
You can also place the eggs into alcohol, bleach or hand sanitizer to kill them.

### Collect a specimen:

Specimens of any life stage can be turned in to the New Jersey Department of Agriculture's lab for verification.

### Take a picture:

With your GPS function turned on your smartphone or a camera with GPS, take a photograph of **ANY** life stage (including egg masses).

Submit picture to: [SLF-plantindustry@ag.nj.gov](mailto:SLF-plantindustry@ag.nj.gov)

### Report a site:

If you can't take a specimen or photograph, call and leave a message detailing the sighting location/address and your contact information.

**NJ Spotted Lanternfly Hotline at 1-833-223-2840 (BADBUG0)**

